

# Leicestershire Safer Communities Strategy Board

## Leicestershire Police Update

8<sup>th</sup> December 2016

Chief Superintendent Andy LEE  
Local Policing Directorate Commander



Leicestershire  
**Police**

Protecting our communities



Police and Crime Plan  
2013 - 2017

# Putting you at the heart of policing

Your voice in Leicester, Leicestershire and Rutland

## A new Police and Crime Plan is due covering:

- VICTIMS
- VULNERABILITY
- VALUE FOR MONEY
- VISIBILITY

### 8.2 Supporting victims and witnesses



so that performance is not just restricted to achievement against targets but most importantly on meeting the needs of victims.

**Strategic Priority 5 - To increase reporting of domestic abuse and ensure a positive outcome for victims and witnesses of domestic abuse**

Domestic abuse is a term used to cover all forms of abuse, control and violence between those aged 16 or over who are, or have been intimate partners or family members. I recognise that domestic abuse can affect all communities and as such I am committed to ensuring that Leicestershire Police continue to provide an accessible service to all victims of domestic abuse.

Following a government consultation in 2012 ('Getting it right for victims and witnesses'), Police and Crime Commissioners will from October 2014 be responsible for locally commissioning most of the emotional and practical support services for victims of crime provided by the voluntary, community and social enterprise sectors.

I will commission support services which provide specialist support for victims and witnesses of crime. There is significant evidence of the link between being a young victim of crime and youth offending. This shows how the priorities are linked and our response across the partnership must also understand and respond to these crossovers.

"I am keen to encourage male and female victims and those in same sex relationships to report incidents of domestic abuse to access services."

### Safeguarding Children and Adults

Safeguarding covers a wide range of issues including domestic violence, abuse and neglect.



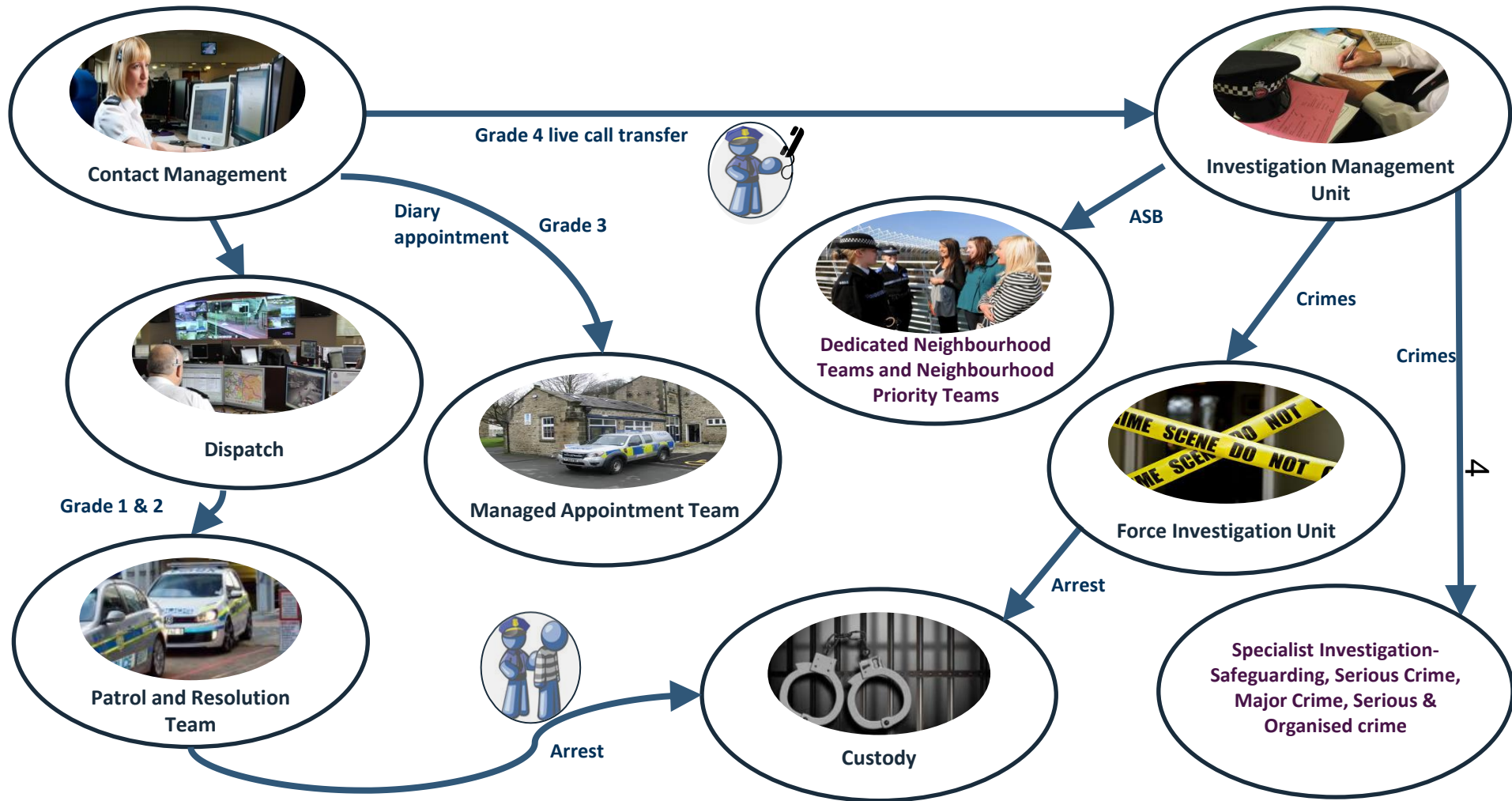
POLICE & CRIME  
COMMISSIONER  
for Leicestershire



# Then and now

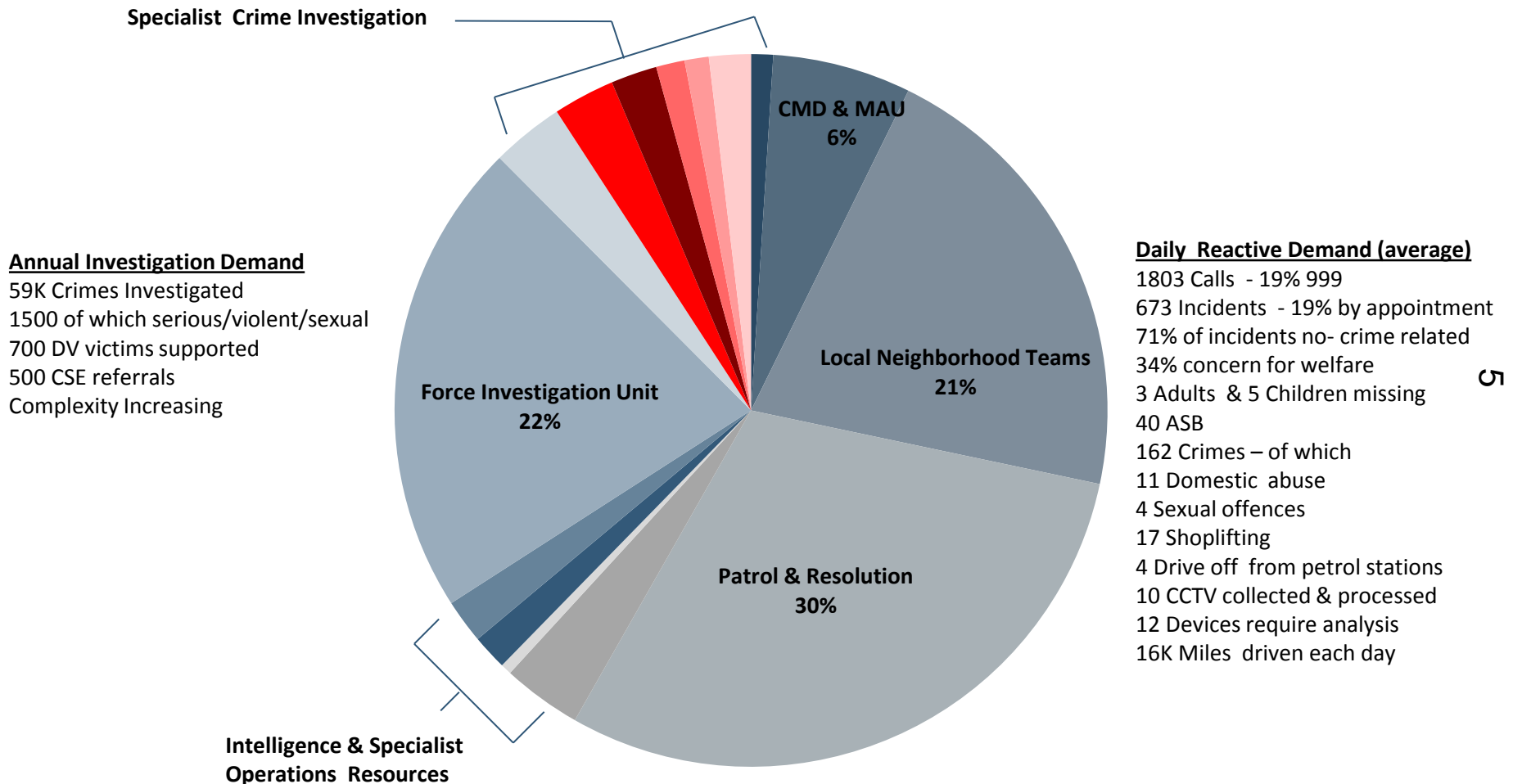


# Teams and roles





# Resources & Demand (LLR Wide)



Keep in mind that the vast majority of resources work either a 16 or 24 hrs rotating shift pattern.

# Officer per population

	2006	2007	2008	2009	2010	2011	2012	2013	2014	2015	2016
Police Officers	2,257	2,225	2,210	2,346	2,303	2,198	2,126	2,074	2,028	1,943	1,824
Police Staff	1,222	1,367	1,351	1,467	1,486	1,359	1,389	1,435	1,458	1,467	1,444
Police Officers per 1,000 pop	2.3	2.3	2.2	2.3	2.3	2.2	2.1	2.0	1.9	1.8	1.7
Total Police Staff per 1,000 pop	1.3	1.4	1.4	1.5	1.5	1.3	1.4	1.4	1.4	1.4	1.4
Population per Police Officer	431	442	449	426	438	463	482	498	515	543	583
Population per Police Staff	796	719	734	681	679	750	738	720	716	720	737

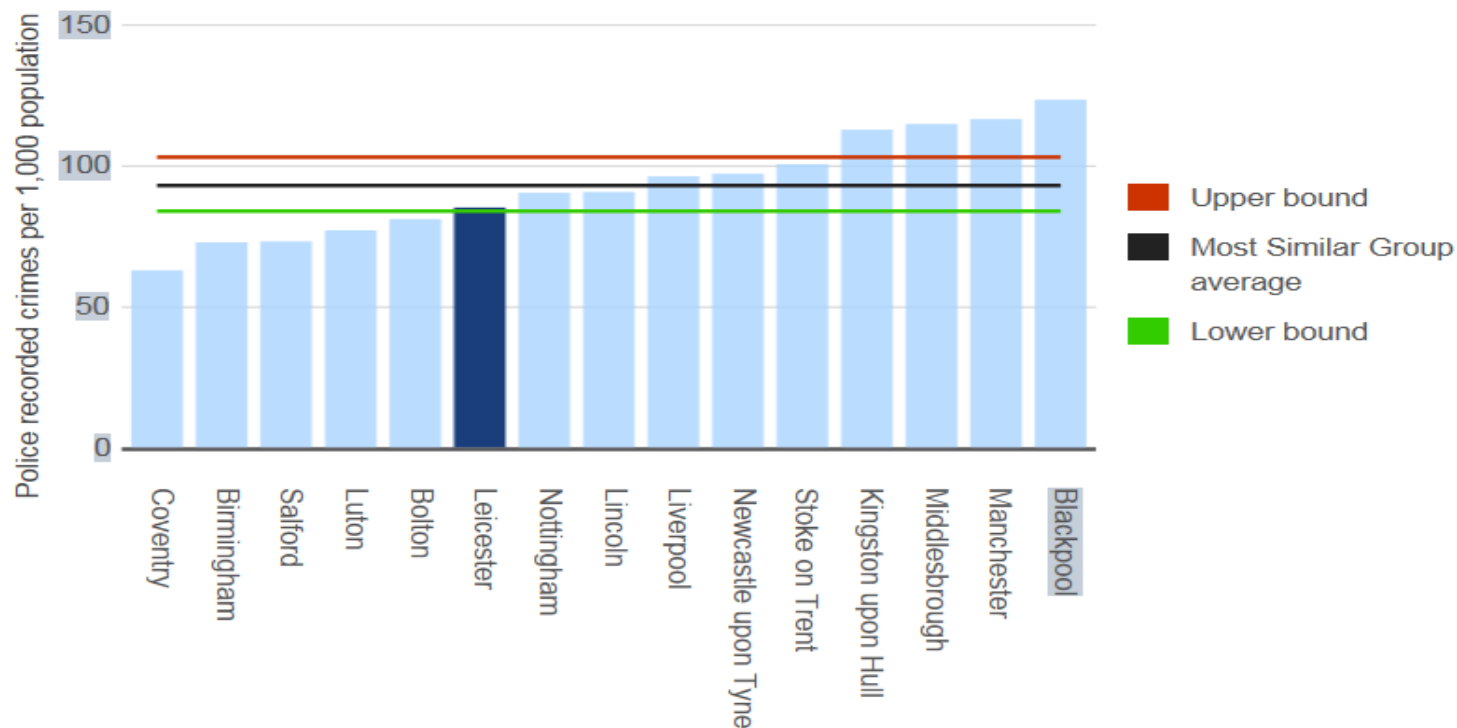
9

# How do Leicestershire compare to other Forces?

All crime



In the year ending June 2016, the crime rate in Leicester was about the same as the average crime rate across similar areas.



7



Inspecting policing  
in the public interest

## ***Effectiveness***

***How effective is the force at keeping people safe and reducing crime?***

**Good** (February 2016)

## ***Efficiency***

***How efficient is the force at keeping people safe and reducing crime?***

**Good** (October 2015)

## ***Legitimacy***

***How legitimate is the force at keeping people safe and reducing crime?***

**Good** (February 2016)

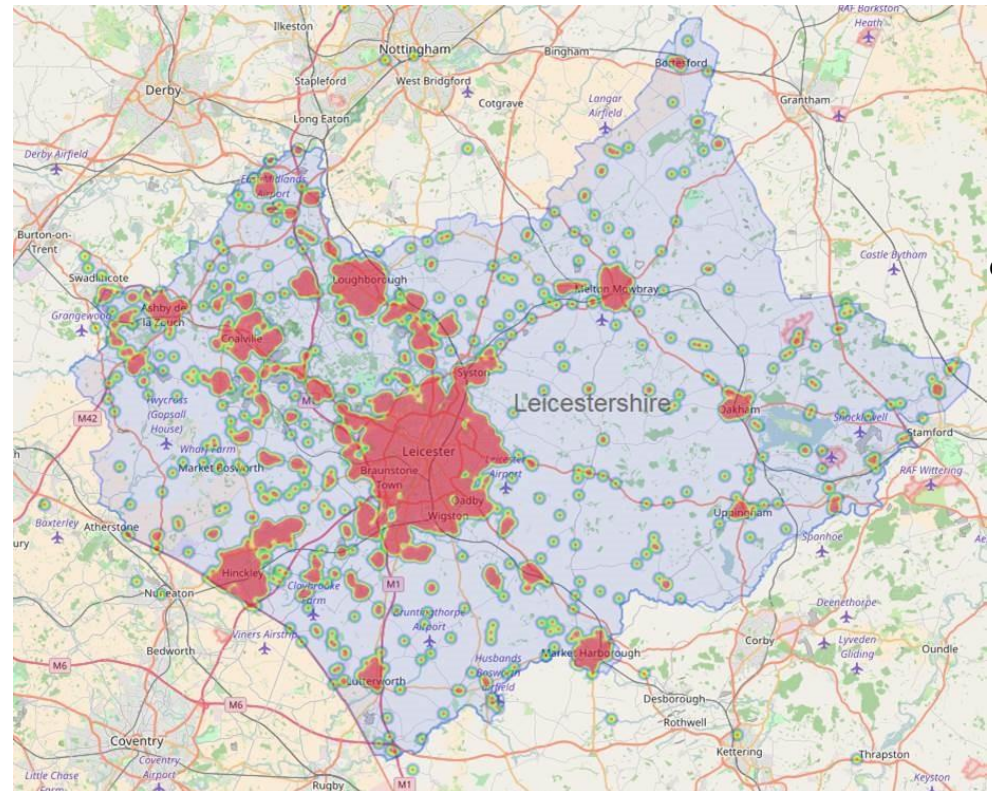


# Demand and patrol plans

Incidents assessed against THRIVE criteria:

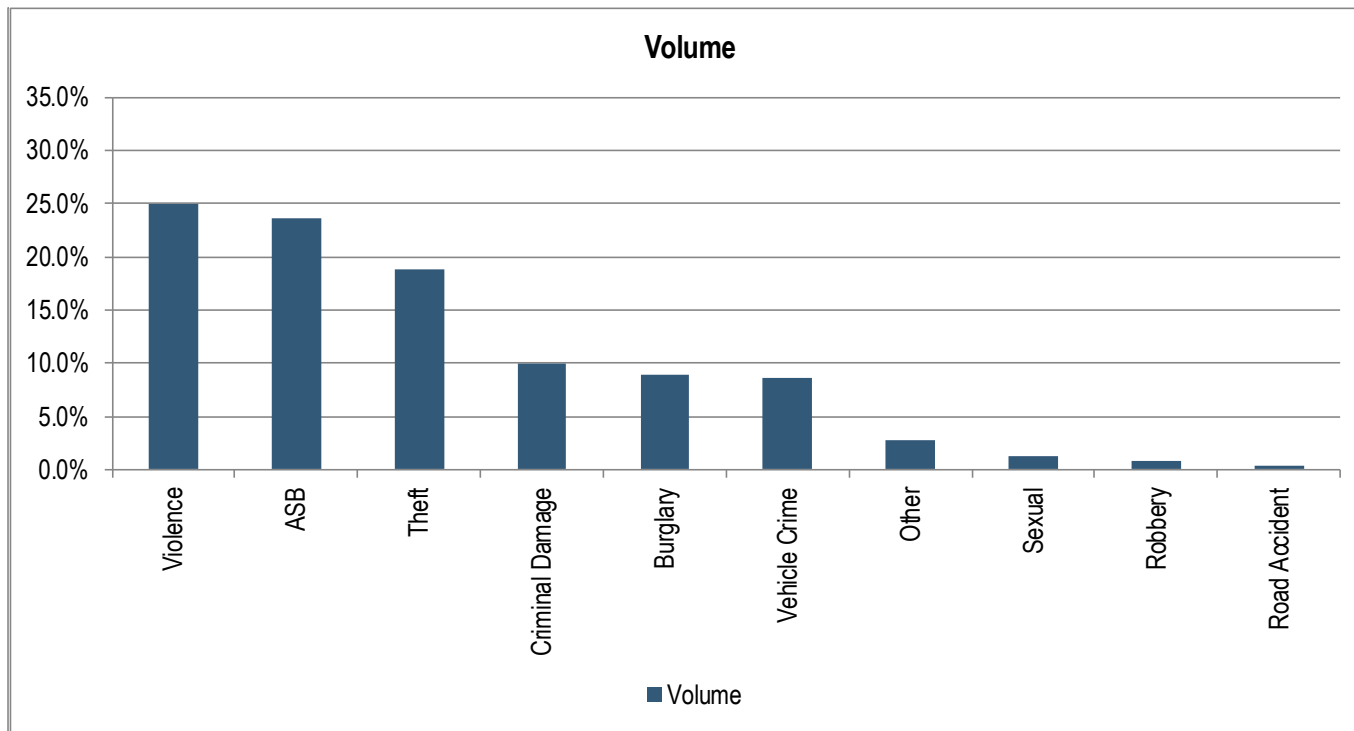
- **Threat**
- **Harm**
- **Risk**
- **Investigative opportunities**
- **Vulnerability**
- **Engagement opportunities**

Patrol and resolution officers deployed proactively to prevent crime and ASB



# Volume Vs Harm

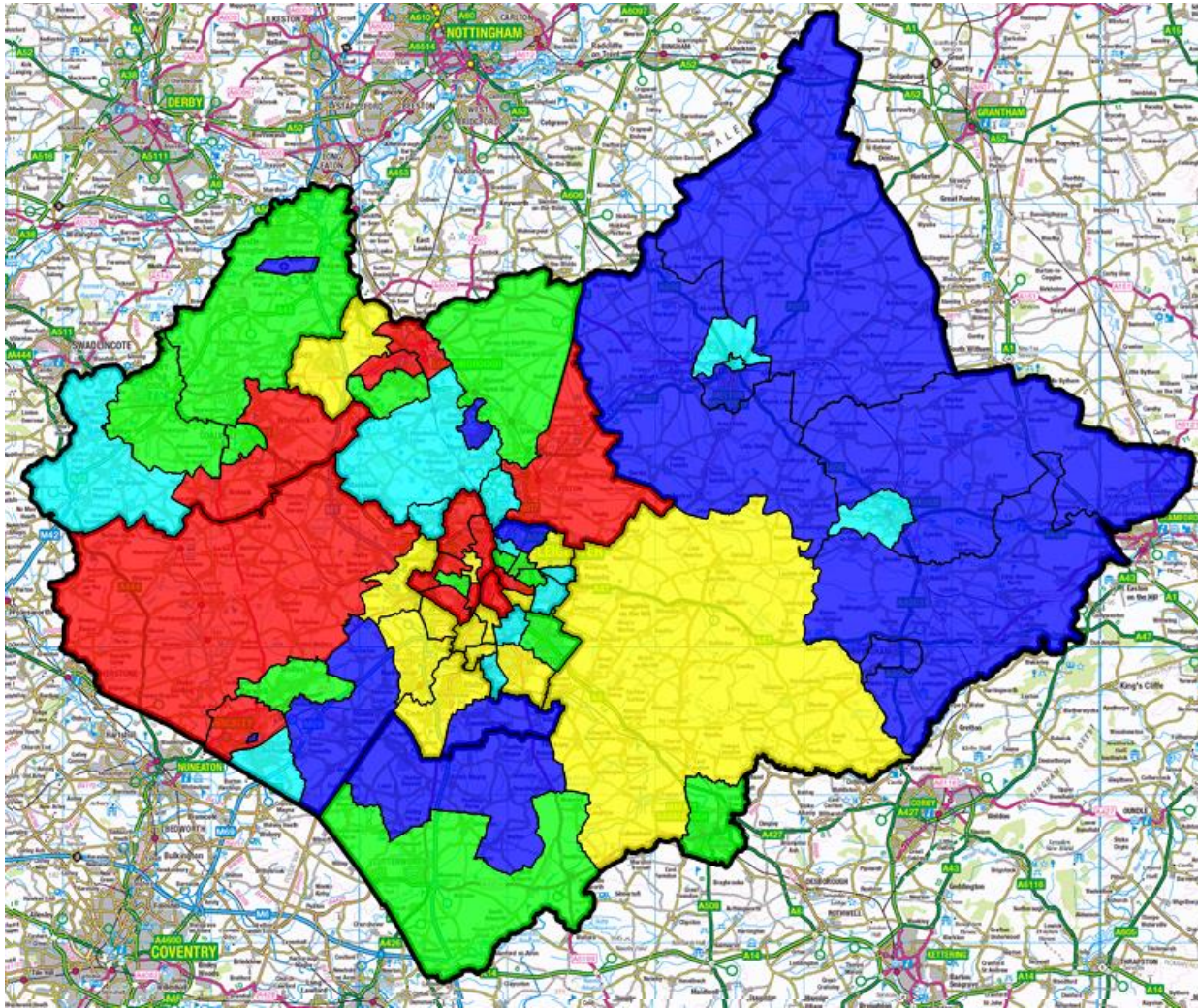
- The chart below shows harm by category, sorted by highest to lowest volume



- As can be seen, sexual, robbery and Road accidents are significantly low volume but represent very high harm levels



# The Geographical Spread of Volume



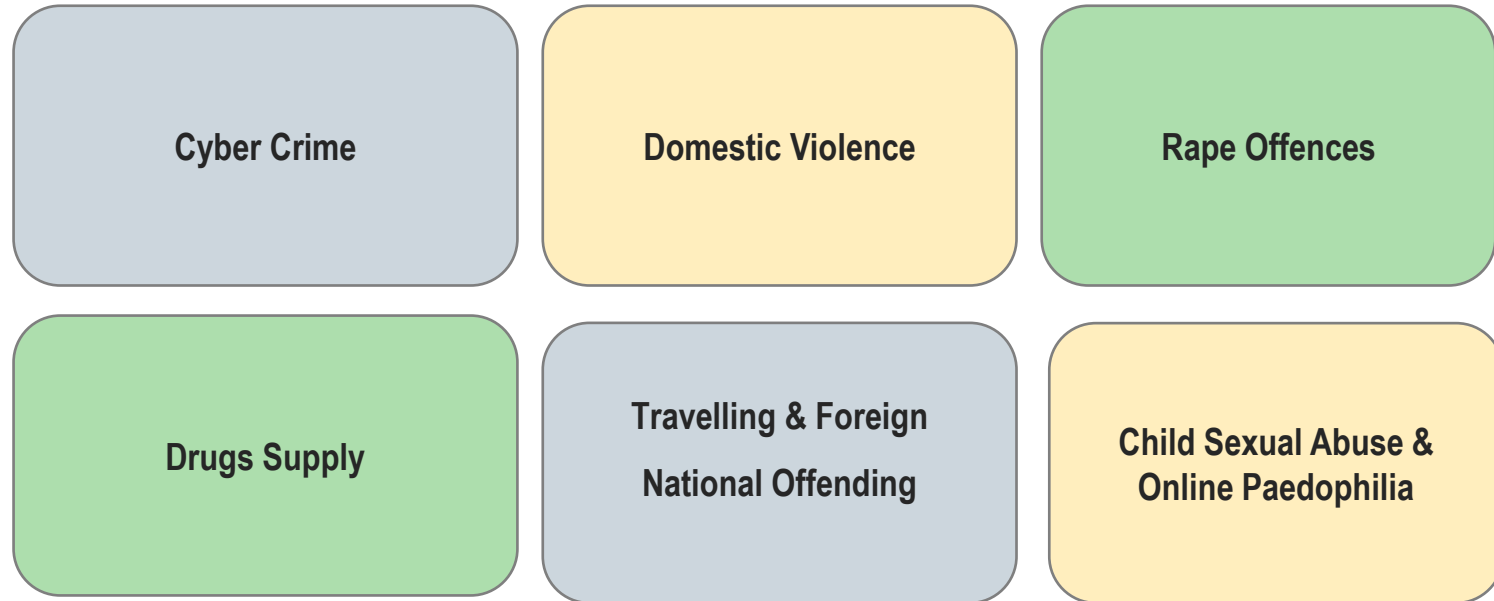
## Top 10 Neighbourhoods based on Volume



- N04 - Castle
- N62 - Loughborough Town
- N01 - New Parks
- N16 - Spinney Hills
- N05 - Braunstone Park & Rowley Fields
- N03 - Braunstone Park & Rowley Fields
- N08 - Westcotes
- N22 - Abbey Bosworth
- N35 - Syston & Ibstock
- N29 - Hatfield Greater

N16 - Spinney Hills NPT moves from 13<sup>th</sup> for volume to 4<sup>th</sup> for Harm.

N09 – Latimer moves from 37<sup>th</sup> for Volume to 10<sup>th</sup> for Harm

# 2016 Strategic Priorities



-  Emerging strategic priority
-  Amended Portfolio

# Strategic Policing Requirement

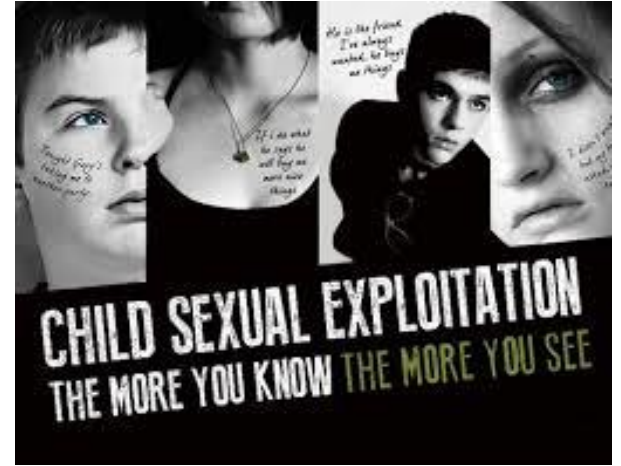
- Terrorism
- Organised Crime
- Threats to public order requiring a cross border response
- Large scale cyber incidents
- Child Sex Exploitation

Forces need consistency when dealing with:

- Public order
- Police use of firearms
- Surveillance
- Responses to CBRN incidents



# Rebalancing is not optional?



**ipcc**  
independent  
police complaints  
commission

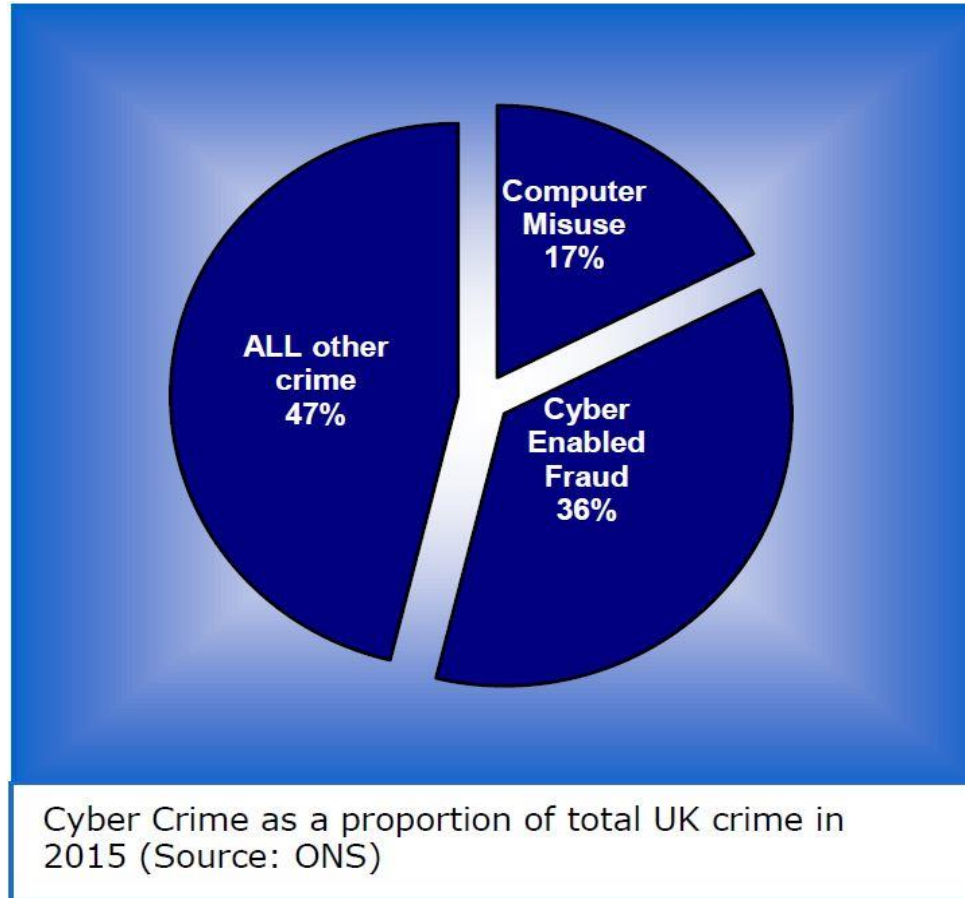


Inspecting policing  
in the public interest



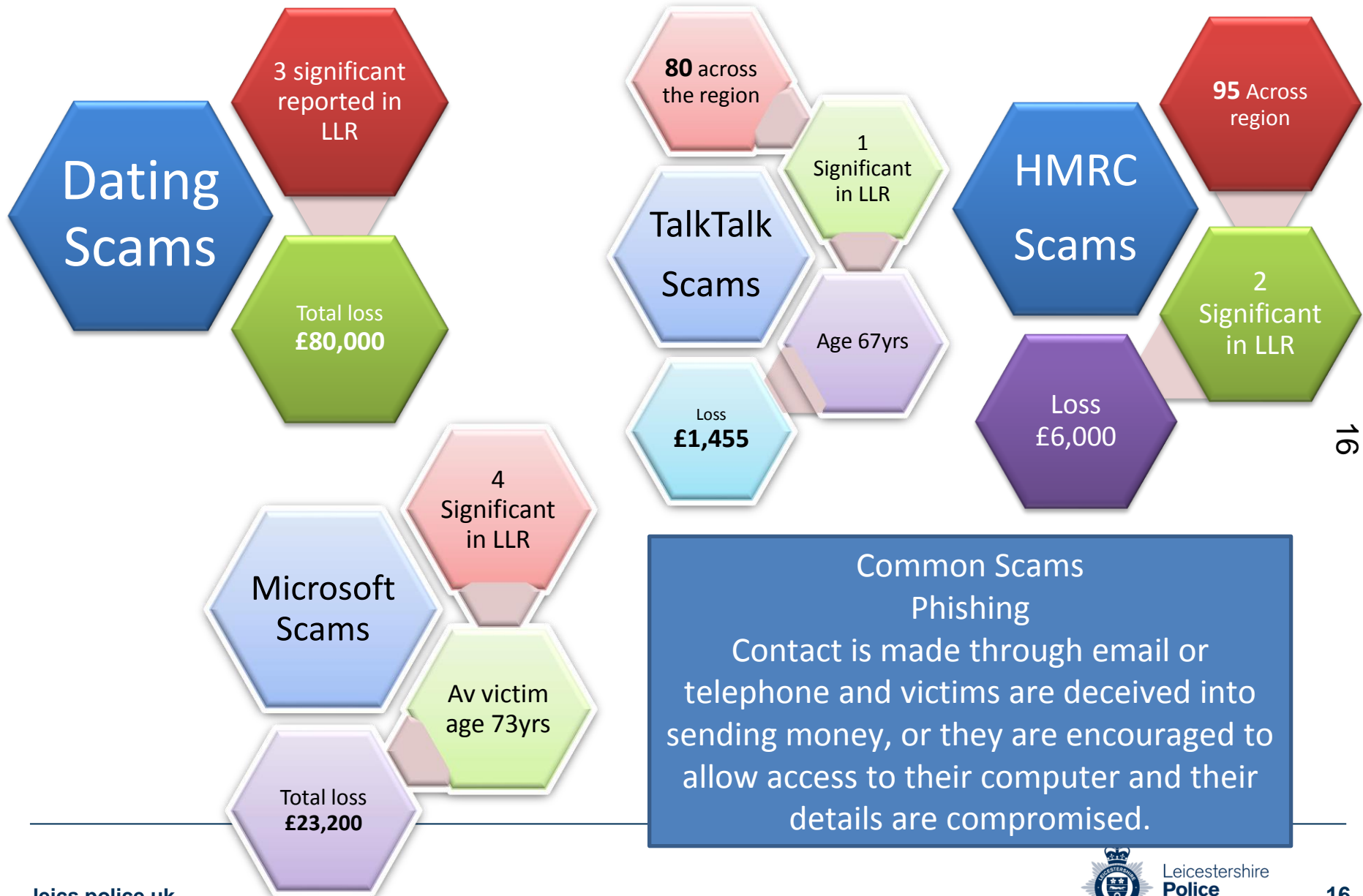


# The Cyber threat



15

# Action Fraud Reports for LLR (May 2016)



# Cyber crime victims



**10,731 victims**  
of virus/malware/spyware

## Who's least likely to behave securely online?



## What puts victims at risk online?

Occasionally download unknown files and web links on their:



Occasionally don't download the latest software updates straight away on their:

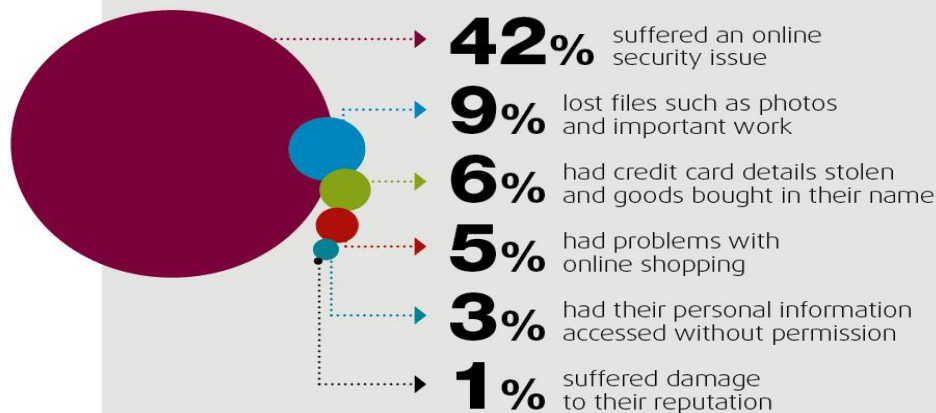


# Don't be a statistic Be Cyber Streetwise

Download and update your security software.  
Get handy tips at [www.nationalcrimeagency.gov.uk](http://www.nationalcrimeagency.gov.uk)

@nca\_uk | facebook.com/nca

## What happens when victims get infected?



17

To stay safe online visit [www.cyberstreetwise.com](http://www.cyberstreetwise.com) | @cyberstreetwise | facebook.com/cyberstreetwise

Sources: National Cyber Security Tracker, Office for National Statistics

## Section 17 Crime and Disorder Act 1988

***“Without prejudice to any other obligation imposed on it, it shall be the duty of each authority to which this section applies to exercise its various functions with due regard to the likely effect of the exercise of those functions on, and the need to do all that it reasonably can to prevent, crime and disorder in its area”***

18